

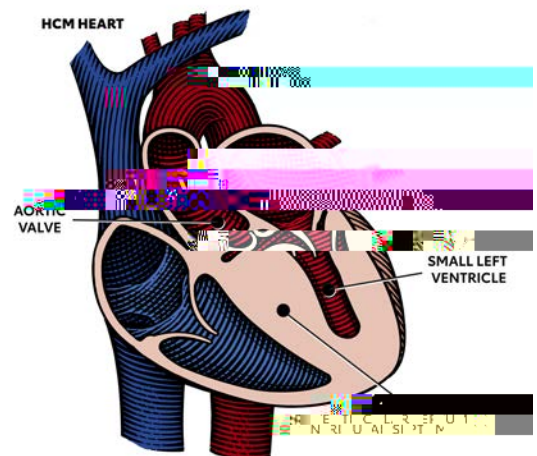
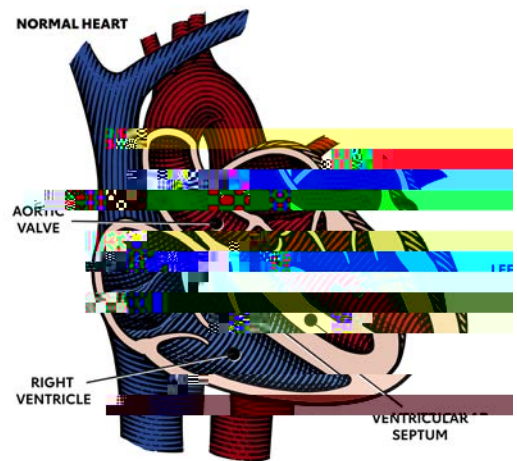


American
Heart
Association





stiffen, making it difficult for the heart's chambers to adequately fill up or pump out blood.

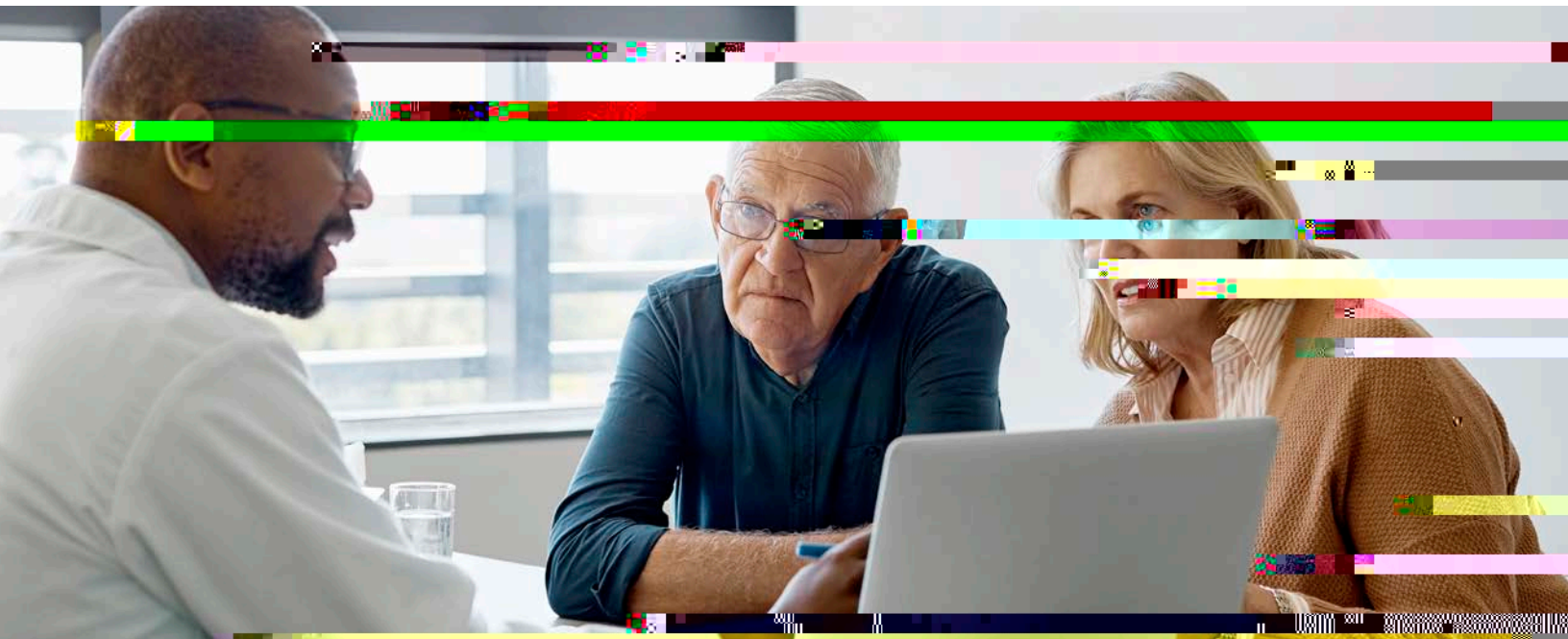


1. Raj MA, Ranka S, Goyal A. Hypertrophic Obstructive Cardiomyopathy. [Updated 2022 Oct 31]. In: StatPearls [Internet]. Treasure Island (FL): StatPearls Publishing; 2022 Jan-. Available from: <https://www.ncbi.nlm.nih.gov/books/NBK430820/>
2. Hypertrophic cardiomyopathy (HCM). American Heart Association. Updated May 13, 2022. Accessed December 16, 2022. <https://www.heart.org/en/health-topics/cardiomyopathy/what-is-cardiomyopathy-in-adults/hypertrophic-cardiomyopathy>

A timely diagnosis is an important part of an HCM patient's care journey to ensure access to effective treatments that are key for extending length and quality of life.

*...but even before they have access to
a knowledgeable clinician,*

overcoming barriers to a timely
HCM diagnosis emerged from the
roundtable.



It can be challenging for HCPs to treat and help their patients manage HCM.



Assuming you have a team that thinks it's important, I think you or another [unclear]

. Different EMRs can cause a lot of miscommunications... patients often have providers at different hospitals, different systems, different places. And so, trying to keep everyone on the same page is challenging.



Roundtable participants identified the key collaborators and contributors for delivering optimal care and 1 eolk I R ableol



Resource gaps can have a negative impact on the timely diagnosis and provision of guideline-directed treatment of HCM. So there was discussion about current patient and HCP resource gaps and steps that can be taken to address them.

I wish that I had had someone...put it in perspective. Not that it's not serious and not that I can be cavalier



As I last looked, there are about 4,500 to 5,000 genetic counselors in this country and maybe about a thousand geneticists...
Nacs...
oNNkArMaroyNnNrNAnNöc
rNNN...cINA

